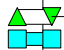
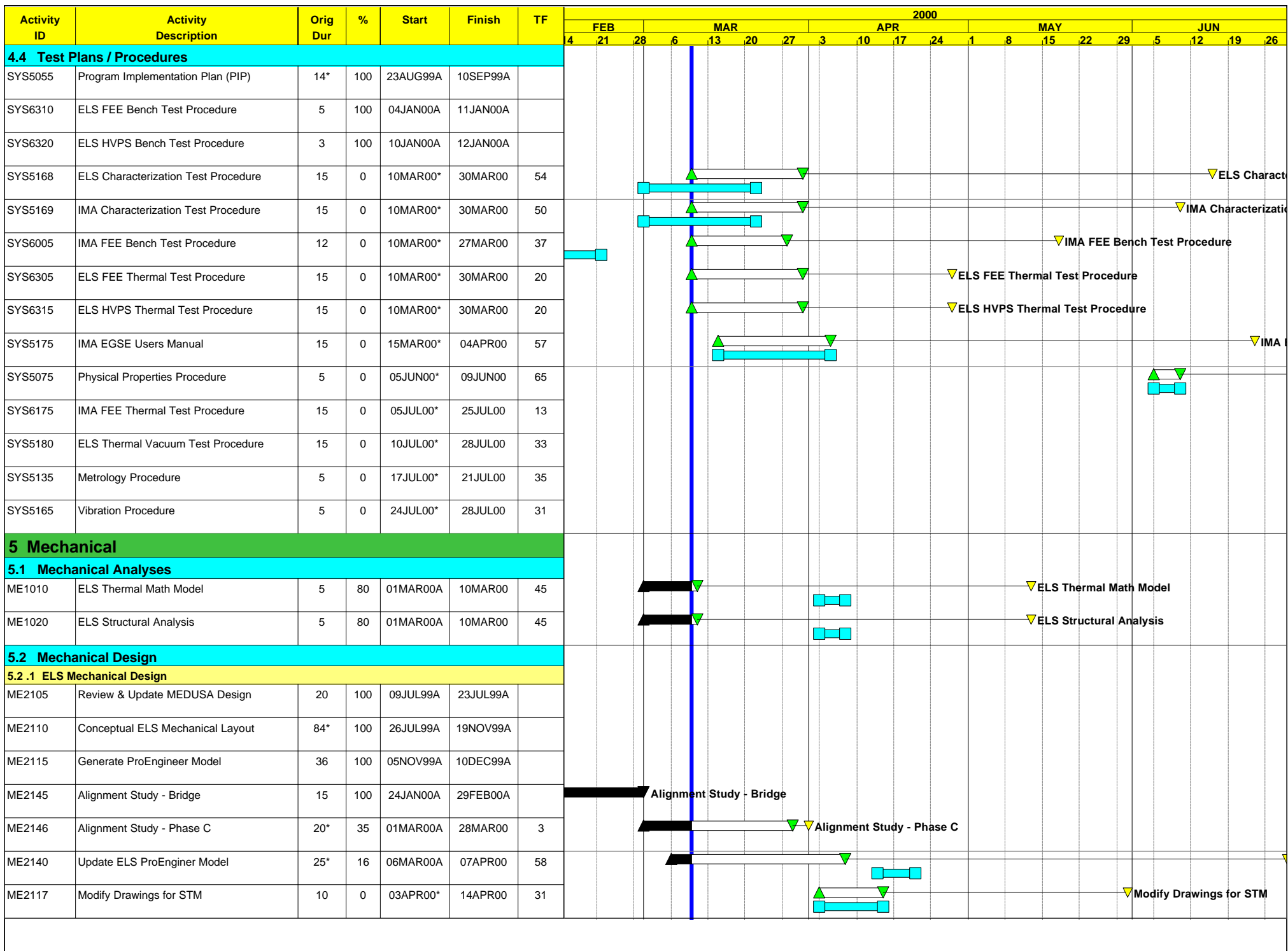
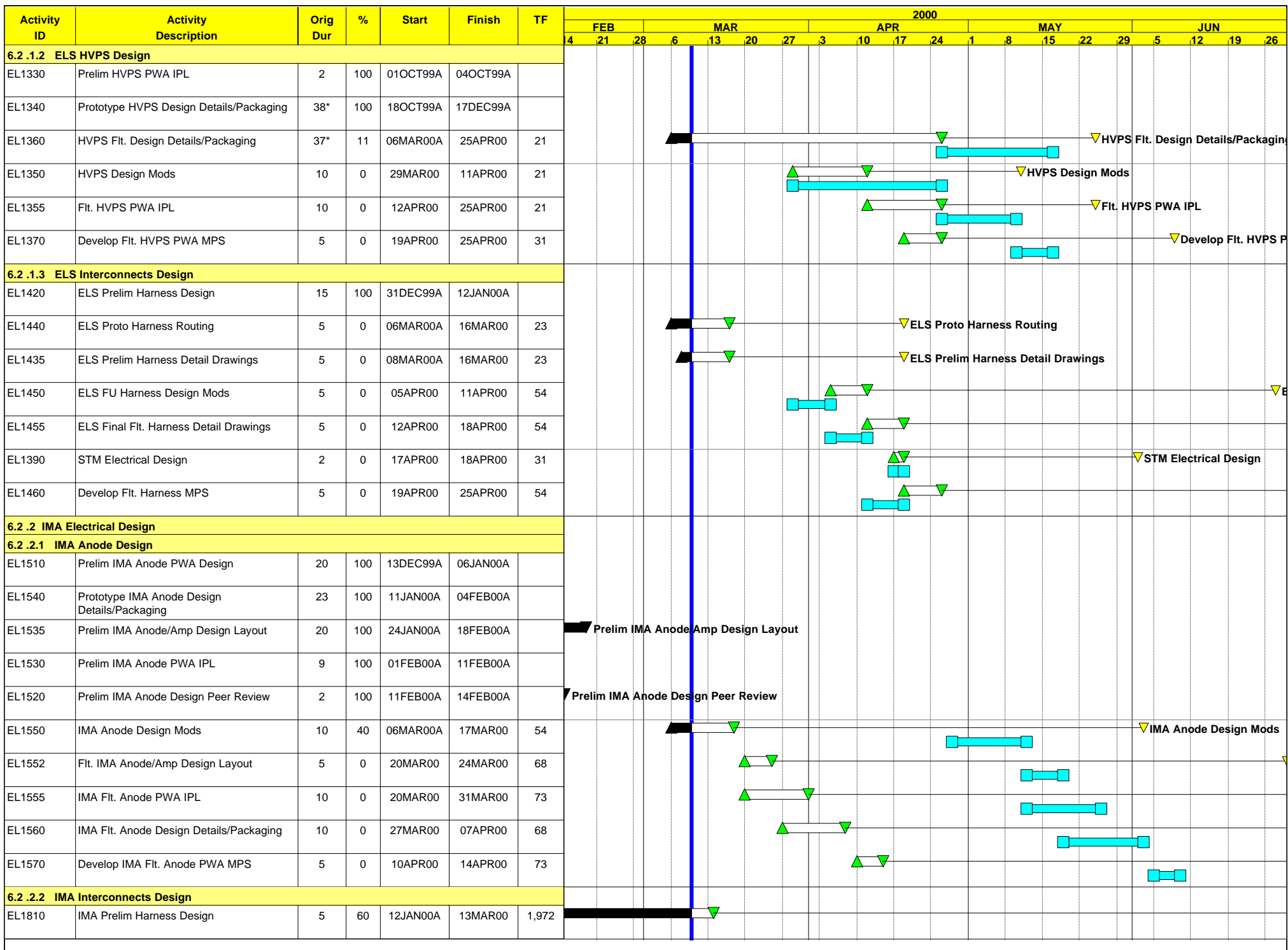


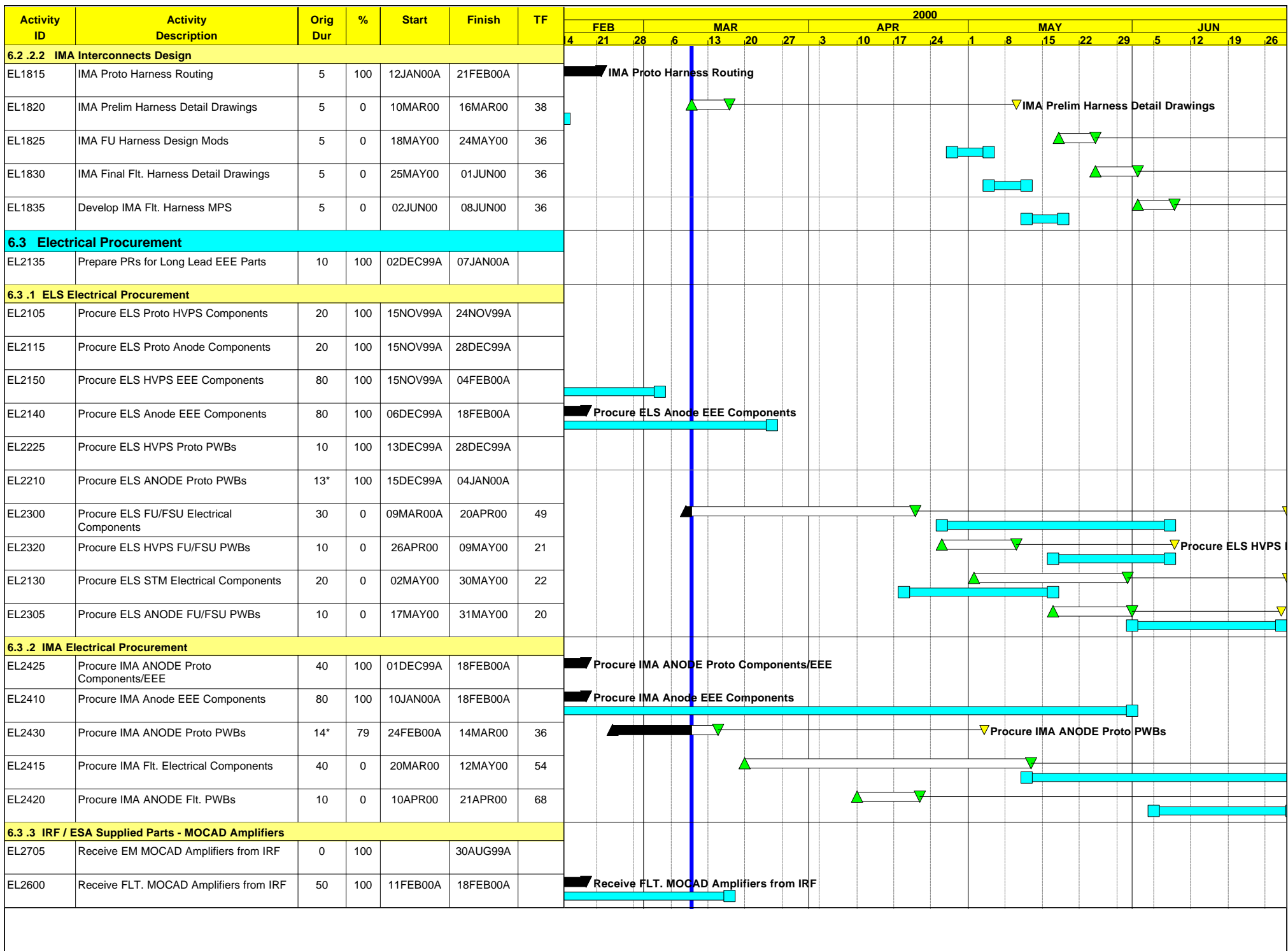
Activity ID	Activity Description	Orig Dur	%	Start	Finish	TF	2000																	
							FEB			MAR			APR			MAY			JUN					
							4	21	28	6	13	20	27	3	10	17	24	1	8	15	22	29	5	12
3.3 Configuration Management																								
PA0600	CDM Support - Bridge	103*	100	01OCT99A	29FEB00A		CDM Support - Bridge																	
PA0650	CDM Support	221*	3	01MAR00A	15JAN01	0																		
4 Systems																								
4.1 Trade Study / Analyses																								
SYS0110	IMA Prototype Amplifier Board Testing	63	100	09AUG99A	24SEP99A																			
SYS0120	ELS Insulation Selection	22*	100	16AUG99A	27AUG99A																			
4.1.1 ELS UV Rejection Study																								
SYS0150	ELS Coatings UV Rejection Study	10	100	01OCT99A	29OCT99A																			
SYS0153	ELS Ray Tracing UV Rejection Study	20	100	04NOV99A	28DEC99A																			
SYS0155	ELS Baffles UV Rejection Study	20	100	01DEC99A	28DEC99A																			
4.2 Requirements Doc/Spec's																								
SYS0220	P/L Interface Doc - B (PID/B) - Draft (Bridge)	327	100	02AUG99A	29FEB00A		P/L Interface Doc - B (PID/B) - Draft (Bridge)																	
SYS0260	Develop HVPS Specification	68	100	02AUG99A	01DEC99A																			
SYS0275	Develop ELS FEE Specification	71*	100	30SEP99A	31DEC99A																			
SYS0285	Develop IMA Anode Bd Specification	71*	100	30SEP99A	31DEC99A																			
SYS0220C	Payload Interface Doc - B (PID/B) - Draft	181*	4	01MAR00A	13NOV00	0																		
4.3 Interface Control Documents																								
SYS0325IP	IMA Imager MICD - SwRI PDR	24*	100	09AUG99A	10SEP99A																			
SYS0330IP	IMA Imager EICD - SwRI PDR	24*	100	09AUG99A	10SEP99A																			
SYS0310IP	ELS Mechanical ICD - SwRI PDR	19*	100	16AUG99A	10SEP99A																			
SYS0315IP	ELS Electrical ICD - SwRI PDR	19*	100	16AUG99A	10SEP99A																			
SYS0350AP	ASPERA Mechanical ICD - Aspera IPDR	62*	100	30SEP99A	19NOV99A																			
SYS0360AP	ASPERA Electrical ICD - Aspera IPDR	2	100	30SEP99A	01OCT99A																			
SYS0370AP	IMA Mechanical ICD - Aspera IPDR	62*	100	30SEP99A	19NOV99A																			
SYS0375AP	IMA Electrical ICD - Aspera IPDR	2	100	30SEP99A	19NOV99A																			
SYS0320IP	ELS Thermal ICD - SwRI CDR	2	0	28APR00	01MAY00*	9																		
4.4 Test Plans / Procedures																								
SYS5020	Product Assurance Implementation Plan (PAIP)	19*	100	16AUG99A	10SEP99A																			

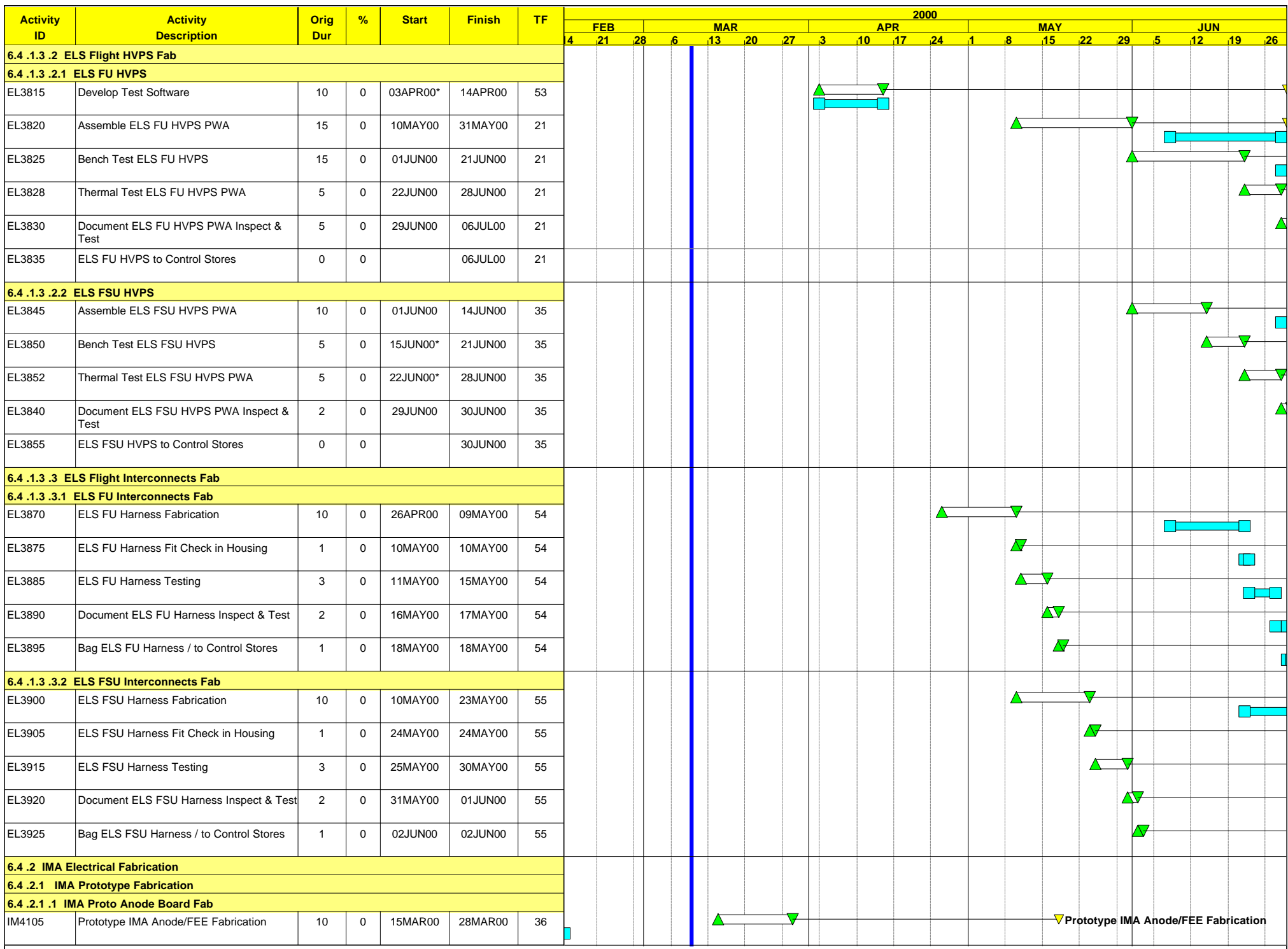


Activity ID	Activity Description	Orig Dur	%	Start	Finish	TF	2000																	
							FEB			MAR			APR			MAY			JUN					
							4	21	28	6	13	20	27	3	10	17	24	1	8	15	22	29	5	12
5.3 Mechanical Procurement																								
5.3.1 ELS Materials																								
ME3100	Procure ELS Raw Materials for Housing & Details	50*	88	10JAN00A	17MAR00	57																		
ME3110	Procure ELS Mechanical Piece Parts	50*	88	10JAN00A	17MAR00	57																		
ME4315	Procure Thermal Blanket Materials	10	0	28MAR00	10APR00	103																		
ME3320	ELS Shipping Container(s) Procurement	20	0	03APR00*	28APR00	58																		
ME7000	ELS/IMA Contamination Procurement	20	0	01MAY00*	26MAY00	48																		
5.3.2 IMA Materials																								
ME3200	Procure IMA Raw Materials for MCP Holder	12*	58	01MAR00A	16MAR00	36																		
ME3210	Procure IMA Mechanical Piece Parts	12*	58	01MAR00A	16MAR00	36																		
ME3310	IMA Shipping Container(s) Procurement	20	0	03JUL00*	31JUL00	46																		
5.3.3 Ni-63 Sources																								
ME3305	Procure Ni-63 Sources	63*	67	12JAN00A	07APR00	44																		
5.3.4 Sensor MCP's																								
5.3.4.1 ELS MCP's																								
ME3500	Send out Chevron MCP Data Package for Quotes	71*	100	23AUG99A	17SEP99A																			
ME3510	Review ELS Chevron MCP Bids & Award PO	5	100	04OCT99A	11NOV99A																			
ME3505	Receive Quotes for ELS Chevron MCP OV Select	0	100		18OCT99A																			
ME3515	Procure ELS Proto Chevron MCP's(+NRE)	70*	99	01DEC99A	10MAR00	32																		
ME3550	Procure ELS Fit. Chevron MCP (1)	105*	66	01DEC99A	28APR00	61																		
ME3520	Receive ELS Proto Chevron MCP's	0	0		10MAR00	32																		
ME3555	Procure ELS Fit. Chevron MCP's	80	0	10MAR00*	30JUN00	12																		
ME3525	Perform ELS Proto MCP Measuremts & Characterize	5	0	13MAR00*	17MAR00	32																		
ME3560	Perform ELS Fit. MCP Measuremts & Characterize	5	0	11JUL00	17JUL00	12																		
5.3.4.2 IMA MCP's																								
ME3800	IRF Supplied IMA Proto MCP's Received	0	100		14FEB00A																			
ME3805	Perform IMA Proto MCP Measuremts & Characterize	10	0	10MAR00	23MAR00	46																		
ME3850	IRF Supplied IMA Fit. MCP's Received	0	0		03JUL00*	22																		
ME3860	Perform IMA Fit. MCP Measuremts & Characterize	10	0	05JUL00	18JUL00	22																		


Activity ID	Activity Description	Orig Dur	%	Start	Finish	TF	2000																
							FEB			MAR			APR			MAY			JUN				
							4	21	28	6	13	20	27	3	10	17	24	1	8	15	22	29	5
5.4.2 ELS Thermal Blankets																							
ME4320	Fabricate ELS Thermal Blanket(s)	4	0	11APR00	14APR00	103																	
ME4325	Fitcheck ELS Thermal Blankets w/STM/FU/FSU	1	0	24APR00	24APR00	98																	
5.4.3 IMA Mechanical Fabrication																							
5.4.3.1 IMA MCP Holder																							
ME4805	Machine IMA Proto MCP Holder	10	0	17MAR00	30MAR00	36																	
ME4850	Machine IMA Fit. MCP Holder	15	0	17MAR00	06APR00	88																	
ME4815	Plate/Finish IMA Proto MCP Holder	5	0	31MAR00*	06APR00	36																	
ME4825	IMA Proto MCP/Holder Fit Check	3	0	07APR00	11APR00	36																	
ME4860	Plate/Finish IMA Fit. MCP Holder	5	0	07APR00	13APR00	88																	
ME4870	IMA Fit. MCP/Holder Fit Check	3	0	19JUL00	21JUL00	22																	
6 Electrical																							
6.2 Electrical Design																							
6.2.1 ELS Electrical Design																							
6.2.1.1 ELS Anode/Amplifier Design																							
EL1210	Prelim ELS Anode/Amp PWA Design	20	100	30SEP99A	27OCT99A																		
EL1225	Prelim ELS Anode/Amp Design Layout	10	100	30SEP99A	29OCT99A																		
EL1240	Prototype ELS Anode Design Details/Packaging	10	100	15OCT99A	10DEC99A																		
EL1230	Prelim ELS Anode/Amp PWA IPL	5	100	03DEC99A	09DEC99A																		
EL1245	Prelim ELS Anode/Amp Detail/Fab Drawings	10	100	06DEC99A	13DEC99A																		
EL1220	Prelim ELS Anode/Amp Design Peer Review	2	100	07DEC99A	08DEC99A																		
EL1250	ELS Anode/Amp Design Mods	10	0	29MAR00	11APR00	20																	
EL1255	Fit. ELS Anode/Amp PWA IPL	10	0	12APR00	25APR00	25																	
EL1258	Fit. ELS Anode/Amp Design Layout	5	0	12APR00	18APR00	20																	
EL1260	Fit. ELS Anode/Amp Design Details/Packaging	10	0	19APR00	02MAY00	20																	
EL1265	Fit. ELS Anode/Amp Detail/Fab Drawings	10	0	03MAY00	16MAY00	20																	
EL1270	Develop ELS Fit. Anode/Amp PWA MPS	5	0	03MAY00	09MAY00	35																	
6.2.1.2 ELS HVPS Design																							
EL1310	Prelim HVPS PWA Design	58*	100	16AUG99A	20SEP99A																		
EL1335	Prototype HVPS Board Layout	71	100	23AUG99A	01DEC99A																		








Activity ID	Activity Description	Orig Dur	%	Start	Finish	TF	2000																				
							FEB			MAR			APR			MAY			JUN								
							4	21	28	6	13	20	27	3	10	17	24	1	8	15	22	29	5	12	19	26	
7.09.1 APAF System Design																											
SW0915	APAF Design Validation	1	0	04DEC02	04DEC02	90																					
7.09.2 APAF System Implementation																											
SW0920	APAF Coding & Configuration	25	0	27DEC02	31JAN03	90																					
SW0925	APAF Implementation Review	10	0	27JAN03	07FEB03	90																					
7.09.3 APAF System Integration & Test																											
SW0930	APAF System Test Plan Development	20	0	05DEC02	06JAN03	114																					
SW0935	APAF System Verification Testing	10	0	10FEB03	21FEB03	90																					
7.10 ASPERA Daily Web-Based Displays																											
7.10.1 Daily Web-Based Display System Requirements																											
SW1005	Define & Document Display System Requirements	35	0	01JUL02*	19AUG02	159																					
SW1010	Web-Based Display System Requirements Review	10	0	20AUG02	03SEP02	159																					
SW1015	Display System Requirements Document Deliverable	5	0	04SEP02	10SEP02	159																					
7.10.2 Daily Web-Based Display System Design																											
SW1020	Daily WB Display System Design	50	0	11SEP02	19NOV02	159																					
SW1025	Daily WB Display System Design Review	5	0	06NOV02	12NOV02	174																					
SW1028	Daily WB Display System Design Validation	20	0	06DEC02	07JAN03	159																					
7.10.3 Daily Web-Based Display System Implementation																											
SW1030	Daily WB Display Coding & Configuration	35	0	05FEB03	25MAR03	179																					
SW1035	Daily WB Display Implementation Review	10	0	26MAR03	08APR03	179																					
7.10.4 Daily Web-Based Display System Test																											
SW1040	Daily WB Display System Test Plan Development	10	0	02APR03	15APR03	159																					
SW1045	Daily WB Display System Verification Testing	5	0	07MAY03	13MAY03	159																					
7.11 ELS Characterization Software																											
SW1105	ASPERA-3 DPU SIM Code Furnished by IRF	3	0	12JUN00*	14JUN00	199																					
SW1110	Configure Software for ELS Instrument DPU SIM	20	0	15JUN00	13JUL00	199																					
SW1115	Acquire, Translate, & Archive Cal Data Files	65	0	08AUG00	07NOV00	182																					
SW1120	Update VIDF Files Based on Calibration Results	10	0	08NOV00	21NOV00	182																					
7.12 Post Launch Software Development																											
7.12.1 Post Launch - Cruise Phase																											
7.12.1.1 IDFS Updates																											
SW1213	Update IDFS Creation Software (If Req'd)	140	0	02JUN03*	18DEC03	7																					

ASPERA-3 DPU SIM Code Furnished by IRF 

Configure Software for ELS Instrument DPU SIM 

Acquir 